

COMPLIMENTARY

The Heart of the Salish Sea

Port Susan

Discover

STANWOOD | CAMANO ISLAND | KAYAK POINT | WARM BEACH | SILVANA | CONWAY

FALL & WINTER 2016-17

Stay, dine, and enjoy

ROAD TRIP!

**Conway to Cama Beach
and more**

LOCAL TREASURES

**Pilchuck Glass and
Bonhoeffer Gardens**

PERFECT LOCATIONS

**Unique Venues for
Special Occasions**

*ON THE COVER: Glassblower Jay Macdonnell
creates at the Pilchuck Glass School.
Photo Credit: Pilchuck Glass School*

RE/MAX[®]

ASSOCIATE BROKERS



Renae Kettler
Owner
Designated Broker
360.629.3888



Stephen Hayes
Branch Manager
Stanwood
425.422.9439



Dan Lien
Branch Manager
Camano Island
425.327.4909



Natasha Zieroth
Branch Manager
Marysville
425.345.9248



Paul Brauneis
Broker
425.330.8327



Chelisa Crabtree
Broker
425.315.2368



Scott Crawford
Broker
425.583.3179



Kimberly Culp
Broker
360.913.5964



Sarah Darrow
Broker
425.231.8196



Suzie Davis
Broker
360.926.4693



Cathy Glenn
Broker
360.391.2256



Acton Hartzell
Broker
425.308.4751



Victor Kepler
Broker
425.765.7303



Dana Lunceford
Broker
206.380.7829



Michelle Maiers
Broker
206.819.3802



Michelle Maxwell
Broker
206.351.4260



Sky Murphy
Broker
425.280.4368



Laura Nicol
Broker
425.345.8285



Jim Nichols
Broker
425.508.1327



Shaina Olds
Broker
425.330.0383



Jana Palin
Broker
425.501.9498



Jeanette & Ralph Parise, Brokers
425.346.3826



Karyl Quevillon
Broker
425.315.3384



John Quevillon
Broker
425.314.5119



Stan Rice
Broker
425.754.8539



Michael Schopf
Broker
360.862.3668



Ric Shallow
Broker
360.631.1072



Jamie Shaughnessy
Broker
425.268.7291



Stephen Shows
Broker
425.405.8827



Tracy Stevens
Broker
425.330.7052



Yorlly Stites
Broker
360.941.1918



Anne Taylor
Broker
360.507.9140



Veronica Terrell
Broker
425.359.6253



Barbara Tissell
Broker
425.247.8230



Danielle Titland
Broker
720-300-2266



Leo Vollmerhouse
Broker
360.824.1401



Megan Yates
Broker
360.926.3614



Tricia Jacobs
Property Management
206.305.0207

THE
RE/MAX
COLLECTION[®]
Fine Homes & Luxury Properties

STANWOOD

26910 92nd Ave. NW, Ste C-4
Stanwood, WA 98292
360.629.3888

CAMANO ISLAND

370 N East Camano Dr., C-101
Camano Island, WA 98282
360.387.6888

MARYSVILLE

922 State Ave., Ste A
Marysville, WA 98270
360.651.1160

Each office individually owned and operated



www.northwest4sale.com





Moonlight over Lake Goodwin

Isaac Martin Photography

WELCOME TO Port Susan

Bordering the clear waters of Puget Sound's Saratoga Passage and extending inland amid the rolling hills of the Skagit Valley, this unique region is a day-tripper's or a weekender's delight. Discover a hidden treasure filled with outdoor adventures, artist studios and galleries, antique shops, farmers markets, food and craft artisans and plenty of small town charm.

Communities

Stanwood	4
Kayak Point	11
Camano Island	14
Silvana	24
Conway	26

Features

Of Daffodils & Glass	20
---------------------------------	----

Get Outdoors

Take a Hike	7
Crabbing	17
It's for the Birds	30

Road Trips

Silvana-Stanwood loop	12
Conway-Camano	22
Stanwood-Pilchuck	23
Silvana -Seven Lakes	23

Perfect Location	28
-------------------------	----



Discover Port Susan is made possible in part by a grant from the Snohomish County Hotel-Motel Tax Fund.

TO ADVERTISE CONTACT

Julie Applegate: 206-753-7250
julie@philipspublishing.com



Discover Port Susan magazine is published by Philips Publishing Group for the City of Stanwood, Camano Island, Kayak Point, Warm Beach, Silvana and Conway. No part of this magazine may be reproduced without the publisher's written permission. Philips Publishing Group: 2201 West Commodore Way, Seattle, WA 98199; 206-284-8285, philipspublishing.com

PUBLISHER
WRITER
EDITOR
ADVERTISING SALES
DESIGN & PRODUCTION

Philips Publishing Group, Peter Philips, 206-284-8285
Ellen Hiatt, Erin James
Nick Thomas
Julie Applegate, julie@philipspublishing.com, 206-753-7250
Marilyn B. Esguerra

Stanwood



Ellen Hiatt

WITH AN ISLAND CONNECTION to the north and one of the nation's most bustling cities to the south, Stanwood, Washington is an ideal balance of small-town serenity and pastoral charm. A commercial and cultural hub that joins the island community with Snohomish County, the reach of Stanwood ranges from farms and restaurants to authentic Scandinavian lifestyle and pioneer history.

Camping & Lodging

Packaging local history with bedding accommodations is the historic **Stanwood Hotel & Saloon**. Built in the late 1890s, it has housed loggers, mill workers, hunters and tourists. The structure of the building has been preserved despite multiple changes in ownership and renovations. Charming hallways lined with antiques, artwork and cozy period furnishings take you back in time. Recently, the hotel renovated the rooms to include period décor and modern bathrooms, televisions and WiFi. The establishment is also very proud of its ghostly features; the hotel is supposedly haunted and long-documented by ghost hunters.

For a private getaway, book the **Cedar Bluff Cottage**, a quaint three-bedroom vacation home in North Stanwood. The 100-year-old Craftsman style cottage boasts panoramic views of Skagit Bay, islands, farmlands and the century-old cedar woodlands. Sleeping accommodations hold up to six people. A spacious, complete kitchen with a country-style gathering table and a well-furnished living room round out the indoors. Outdoors, guest will find a picnic table, a porch lined with wicker chairs, new fire pit, horseshoes, and bocce ball for their enjoyment.

Camping sites are plentiful in Stanwood, from lakeside resorts to state parks. At **Lake Goodwin Resort**, the park offers RV camping along with cabin rentals. Full RV hookups include water, electricity, septic, free WiFi and cable, along with



Cedar Bluff Cottage



FIND THE TREASURES

at the 8th Annual
Great Northwest Glass Quest
FEB 17-26, 2017

The greatest treasure hunt in the Pacific Northwest! Search for and find unique "Glass Treasures" hand-blown by Mark Ellinger, world-renowned glass artist.



"Clueballs" will be hidden at a variety of host businesses and in community sites around the Stanwood-Camano area. Find a "Clueball" and return it to the location identified inside for an authentic limited edition "Glass Treasure."

Details at www.TheGreatNWGlassQuest.com



12th Annual

Port Susan Snow Goose & Birding Festival

Feb 25 & 26, 2017 www.snowgoosefest.org



Kayak Cottage

Courtesy Snohomish County Parks



Vito Z Memorial Skate Park

Ellen Hiatt

picnic tables and fire pits on-site and plenty of outdoor activity opportunities surrounding the site. A range of rental cabins offer campers indoor amenities with a varying number of beds and kitchenettes. A grocery store is conveniently located on the property with all camping musts from hardware and RV supplies, to a full deli, grocery and apparel area.

Another lakeside camping mecca is the **Cedar Grove Shores RV Park**, where campers have access to the on-site clubhouse, which features a full kitchen, indoor fireplace, WiFi, laundry and lakefront deck with a propane grill. The pet-friendly site is fully fenced

and a perfect destination for family fun including fishing, swimming, water-skiing, horseshoes and more. On the opposing side of Lake Goodwin is the 46-acre **Wenber County Park**. With 1,140 feet of freshwater shoreline, the park offers fishing and a variety of water activities from skiing to leisurely boating and swimming. Partially wooded with cedar, firs and more, campers can enjoy wildlife from deer and elk to hummingbirds and more. The park provides guests with the option of 45 tent spaces, 30 utility spaces, a dump station, three restrooms and three showers.

The Great Outdoors

Whether you stay the night or visit for the day, Stanwood's parks and outdoor activities are plentiful.

At **Wenber County Park** on Lake Goodwin, day-trippers can enjoy half a mile of hiking trails, freshwater boating and fishing from two boat ramps, and swimmers can lounge on 20 feet of dock. Also south of the city is **Kayak Point County Park**, a stunning scenic destination along Port Susan that accommodates a plethora of beachside activities from fishing and swimming to picnicking, camping and more.

At **Church Creek Park**, one of the two city parks in Stanwood proper, visitors can enjoy all of the 16.5-acre park with tall trees, a disc golf course, baseball field, basketball court, playground area, rolling grounds and picnic facilities. The other city park, **Heritage Park**, includes a playground area, three baseball/softball fields, three soccer/lacrosse fields and four miles of walking/biking trails on the 62.5-acre park. Also within Heritage is the **Stanwood Vito Z Memorial Skate Park** with modular-style steel ramps. The skate park provides a mix of grades and materials for skateboard enthusiasts to cruise on.

Keep it simple by embarking on a tour of Stanwood on the **Lindstrom Walking Path**, a 1.4-mile loop that circles the city's eastern businesses. Warm Beach Camp south of Stanwood offers programs year round on its waterfront campus. It is also home to **The Lights of Christmas**, a Northwest holiday tradition with over one million lights.

The Freeborn Lutheran Church hosts the beautiful **Bonhoeffer Botanical Gardens**, a 20-acre garden containing all of Western Washington's indigenous trees, shrubs, vines and more, along with three types of wetlands. In spring, take in the cheerful beauty of more than 400,000 narcissus bulbs in bloom on Daffodil Hill, also tended by the church.



Uff Da Shoppe

Gifts from around the world!

Tues-Sat 11-4

Sun 11-3

Viking Village

Stanwood

360.629.3006

Kringle, Kringle, Kringle
LEFSE, LEFSE, LEFSE
YA BETCHA!

Stanwood Chamber of Commerce



*Our Business is Helping
Your Business Succeed*

stanwoodchamber.org

VISITOR INFORMATION CENTER 360-629-0562

Located inside Stanwood RE/MAX Office at
26910 - 92nd Ave NW, Ste C-4 (QFC Shopping Center)

BUSINESS OFFICE 360-629-0562 • 10101 - 270th St NW, Ste 220, Stanwood, WA 98292

More than pastoral charm and scenic waterfronts

From antique shops to farmstands, artist studios to view cabins — the unique businesses of the Port Susan region are part of why people come to visit. *Discover Port Susan* magazine is THE resource visitors turn to for all that our region has to offer.

TO ADVERTISE CONTACT:
JULIE APPLIGATE AT
JULIE@PHILIPSPUBLISHING.COM
206-753-7250



The UPS Store 4798
Stanwood, WA



The UPS Store 

26910 92nd Ave NW C5
Stanwood, WA 98292

"We are experts at shipping glass, paintings, and other artwork!"

M-F: 8:30am-6pm
Sat: 9am-5pm, Sun: Closed

P. 360.629.8100
F. 360.629.8105

store4798@theupsstore.com
theupsstorelocal.com/4798
facebook.com/theupsstore4798



**UNCOVER CAMANO'S
HISTORIC SITES TOUR**

- 10 Sites Await Discovery
- Interesting & Fun Events
- Contests & Cash Prizes

March 24-26, 2017

Love History & Mystery?

camanoschoolhouse.org/historicsitestour



AMIGO Mexican Restaurant

**15th Annual Best of
2015
Stanwood & Camano**

DRAGON PALACE RESTAURANT

**Best Chinese Food
in Stanwood!**

(360) 629-0514

(360) 629-5052 • 11AM-10PM

(360) 629-8106
Sun-Thurs 11am – 9:30pm
Fri & Sat 11am – 10:30pm

STANWOOD PAVILION

6996 265th St NW, Stanwood, WA

Light Up Your Holidays!

OVER ONE MILLION LIGHTS AT
The Lights of Christmas

In Downtown Stanwood:

FIND LUCILLE FOR
GOOSE ON THE LOOSE
SHOPPING

COMMUNITY TREE LIGHTING

UNIQUE GIFTS AT
FARMER'S MARKET SHOPS

SANTA SIGHTINGS AND
FUN FOR THE KIDS

**Full Calendar of Events at
DiscoverPortSusan.com**



Shima Japanese Restaurant

Ellen Hiatt

Grab a Bite

The culinary scope of Stanwood is a pleasant surprise! The diversity of dining options in the town's two historic districts is amazing.

Starting in downtown Stanwood's historic East End, just off the Pioneer Highway, a slew of businesses dot the main drag of 271st Street. **Polksa Kuchnia** is the real deal for Polish food. Owned and operated by husband and wife duo Sara and Wojtek Lisicki, their pierogis are the rage in town. All from scratch recipes include sausage and soups served with imported beer from Poland and wine from Bulgaria. If you believe that you only live once, dessert should come first at **Stanwood Cupcakes**. Pair your cupcake with hand-dipped Cascade Glacier ice cream.

Drop in at **Wayne's Corner Café**, a sandwich shop and burger stop with a long line of local breakfast favorites and patties between buns. Choose from more than a dozen different omelets, along with other eggy creations and morning staples like the house-made cinnamon roll. For lunch, hardly breach the \$10 mark by ordering from a roster of burgers with toppings from teriyaki to bacon and cheese. For pull-tabs, a jukebox, arcade games and live sporting events projected onto four big screen TVs, grab a pint (or two) and some pan-fried oysters at the **Conway Boxcar**. Next door at the **Stanwood Grill**, downtown's finer dining location, guests can slide into big booths and order from the chalkboard specials menu of creative cuisine from seafood to "landfood" and a full-service bar.

Heading into West Stanwood, those who wish to prepare their meals at home can shop in a newly renovated and expansive **QFC** grocery store. Cross the parking lot to **Ale Spike**, the area's only beer-centric bottle shop with a vast selection of 22-ounce beers and more than two dozen beers on tap to enjoy there or take home in a growler. In the same lot, an easily accessible drive-thru **Starbucks** is next to **Sweet Bliss Frozen Yogurt** for a "weigh and pay" style of DIY yogurt desserts.

Once in Old Town, **The Chatter Box Restaurant** serves up Asian-fusion dishes

from Malaysia, Thailand and India from within their comfortable Craftsman house. A few doors down is **Jimmy's Pizza and Pasta**, a mainstay for locals and tourists alike for pizza/salad combos. Try on the Spartan (a thick-crust pie with sliced mushrooms and crumbled Italian sausage) and the basic but rich Caesar salad. Just across Highway 532 is **Dos Reales Taqueria** for classic carne asada, chile relleno, fajitas and more; while next door is **The Cookie Mill and Bakery**, a one-stop shop for coffee, pastries, baked goods and more.

Travel in time for dinner and a drink at **The Stanwood Hotel and Saloon**, which boasts its original hardwood floors from the 1890s, along with vintage newspapers and memorabilia framed on the walls. **Shima Japanese Restaurant** serves up the finest sushi in town. Alright - it's the finest you'll find for 120 miles. (Yes. It's Polish and Thai food on one end of town and Japanese on the other. In Stanwood. Aren't you glad you came?)

In between the two areas is **Viking Village**, home to **Amundson's Auctions**, holding weekly auctions of all things collectible, and the Scandinavian **Uff Da Shoppe**. Around the corner is the legendary **Duck In Café** where checkered-tile floors, a farmland mural and walk-up counter welcome guests inside to indulge on signature dishes (that all have fowl-related titles). Not far away is another local favorite: the **Farmer's Cafe**. Settle in for a full plate of Corned Beef Hash or one of their weekly specials of pot roast or salmon.

On the eastern side of town is **Stanwood Pavilion** home to **Stanwood Cinemas**, **Amigo Family Mexican Restaurant**, and **Dragon Palace**, for those who prefer food with an Asian flair. Across the way is **Salt & Thistle**, a local food specialty shop and commercial kitchen. As a storefront for North 40 Farm Food, a company focused on helping small, local farmers and producers succeed, Salt & Thistle boasts shelves of local cheeses, plants, beach décor, chocolate bars and a lounge area where customers can enjoy baked goods and other freshly made snacks.

Stanwood Charm

SEARCH, SHOP, DINE

**RAZZLE
DAZZLE**

Gifts and more



www.facebook.com/RazzleazzleGiftsandMore • www.vintagemporium.net

360-629-4414 • 8705 271st St. NW, Stanwood (in Stanwood's historic east end)

Starlight



*Vintage
Emporium*



OLD TOWN ANTIQUES

ANTIQUES FROM OUR FAMILY TO YOURS

We buy and sell ~ Over 30 vendors in one roof

Open Monday-Saturday 11-5 ~ Closed Sundays

10111 270th St. NW, Stanwood • 360.939.0122



**Carriage House
Antiques**

PRIMITIVE TO
MID-CENTURY ITEMS

9901 270TH ST NW
STANWOOD, WA

360-707-1019



A Unique Boutique

8705 271st St. NW
Stanwood, WA 98292
(360) 631-5366
www.lauries.biz

FALL INTO THIS SEASON with fresh flowers, gourmet cheese & wine baskets—even send Grandma some Hot Soup with Rosemary Bread from the Bakery! Pop into the shop this holiday season and pick up a hostess gift, or have us create a pretty corsage to wear for your very own party!

Daily Delivery to Camano, Stanwood, Seven Lakes, Conway!
SPECIAL DELIVERIES FROM LOCAL VENDORS LIKE STANWOOD CUPCAKES & POLSKA KUCHNIA!

Island Floral/Islandfloralshop.com
Come visit Brenda and Brooke
360-631-5399/ 360-926-6279
8701 271st St NW, Stanwood



POLSKA KUCHNIA
www.polskakuchniatl.com

Recipes are handmade from scratch including our own soup stock, sausage, and Pierogi dough and fillings.

Imported beer from Poland and wine from Bulgaria

**Wed-Sat 11 – 9
Sunday 11 – 8**

8620 271st St NW
Stanwood
(206) 355-2893

Yelp, Facebook,
TripAdvisor, Google



Angel of the Winds Casino

NEAR THE BUCOLIC BONHOEFFER GARDENS AND PILCHUCK GLASS SCHOOL, there is a place where the pace picks up. Whether you are looking for a place to stay or a little night life, *Angel of the Winds Casino Hotel & Brewery* has it.

The Casino features over 1,100 slot machines, 16 table games, a keno lounge and weekly promotions. When you need a break from bird watching on Port Susan or gaming in the casino, the hotel offers 125 luxurious rooms with hotel packages that include activities like zip lining, whale watching, beer tastings and more.

Angel's Tap House Brewery serves up eight microbrews, all brewed on site. Along with great craft beer, they are creating and baking artisanal pizzas in a hearth fire pizza oven right in front of the guests. They also serve smoked delicacies from brisket and pulled pork to ribs that fall off the bone. Happy Hour is every Sunday through Thursday from 7-9 p.m. for unbeatable food and drink specials.

The Watershed Restaurant is the go-to spot when looking for variety. It is open for breakfast, lunch and dinner, offering a buffet as well as a full menu. You can find everything from appetizers to burgers, steaks, and pastas. The Watershed Lounge sets the stage for entertainment with live performances five nights a week along with a big screen for sports and other nightly events.

Katie's Kitchen is your spot for fast, friendly food. Grab a small bite, a great burger, sandwiches and more, all at a great value. Stop by any time—they're open 24 hours a day.

Whatever your game is, you'll be sure to find it here. Angel of the Winds is located only three minutes off Interstate 5 at Exit 210. Guests can make reservations online at AngelOfTheWinds.com or call 877-EXIT-210 to book their stay.



Shop the Stanwood's historic East End



Island Floral



Uff Da Shoppe

Unique Shops and Antiques

Famously at the center of Stanwood is the Viking Village, home to restaurants and retailers including **Uff Da Shoppe**, the Scandinavian gift store that also offers home and holiday décor, Seahawks gear and homemade *lefse*.

Stanwood's East End is in the King Building, a family-owned landmark since 1921. Inside are a variety of retailers from **Laurie's**, a women's clothing boutique, **Starlight Vintage Emporium and Razzle Dazzle**, specialist of antiques and vintage clothing, and the new **Island Floral**, for all of your special occasions.

East Stanwood offers shops for the antiquers and boutiquers, among them, **Doilies 2 Doorknobs** and **Ladders & Lace** and another new shop, **Gather Market**.

Heading west is **Old Town Antiques**, a quaint shop which has a sizable selection of antiques, from home décor and furnishings to books, jewelry and vinyl records. **Carriage House Antiques** specializes in more of the same with its own flair: refurbishing collectibles like clocks, lamps, artwork and more. For gently used and refurbished clothing, visit the **Pretty Little Things** consignment boutique. The women's store sells designer bags, trendy apparel and savvy accessories.



Laurie's boutique



Jonathan Schmidt

WHILE IN STANWOOD

Ale Spike

360-386-7650 » alespike.com

Amigo » 360-629-5052

Bonhoeffer Botanical Gardens

425-956-4832 » bonhoeffergardens.org

Carriage House Antiques » 360-707-1019

Cedar Bluff Cottage

360-445-3333 » cedarbluffcottage.com

Cedar Grove Shores RV Park

360-652-7083 » cgsrvpark.com

The Chatter Box Restaurant

360-629-0600 » chatterboxstanwood.com

The Cookie Mill & Eatery » 360-629-2362

Conway Boxcar » 360-629-0651

Dos Reales Taqueria » 360-629-0822

Dragon Palace » 360-629-8106

Duck In Café » 360-629-3440

Fiddleheads Market » 360-629-0886

Jasmin Thai Cuisine » 360-629-2044

Jimmy's Pizza and Pasta » 360-629-6565

Gather Market » 360-629-3125

A Guilded Gallery » 360-629-2787

stanwoodcamanoarts.com/a-guilded-gallery

Island Floral » 360-926-6279/360-631-5399 »

islandfloralshop.com

Klesick Farms

360-652-4663 » klesickfamilyfarm.com

Lake Goodwin Resort

360-652-8169 » lakegoodwinresort.com

Laurie's Boutique

360-631-5366 » lauries.biz

Mossyback Farm » 360-629-2782

Old Town Antiques » 360-939-0122

Orchard's Nursery » 360-629-3586

Pigs Peace Sanctuary

360-629-6433 » pigspeace.org

Pioneer Farm Grill

360-424-6974 » pioneerfarmsgrill.com

Polska Kuchnia

206-355-2893 » polskakuchniallc.com

Port Susan Farmers' Market » portsusan.org

Pretty Little Things » 360-629-8942

Razzle Dazzle Gifts » 360-629-4414

Salt & Thistle Provisions

360-939-0105 » north40farmfood.wix.com/home

Schuh Farms » 360-424-6982

Shima Japanese Restaurant » 360-629-7799

Soggy Bottoms Plants » 360-652-9157

Stanwood Café » 360-629-8427

Stanwood Cupcakes

360-926-8241 » stanwoodcupcakes.com

Stanwood Grill

360-629-5253 » stanwoodgrill.com

Stanwood Hotel & Saloon

360-629-2888 » stanwoodhotelsaloon.com

Starlight Vintage Emporium

360-629-4414 » vintageemporium.net

Sweet Bliss Frozen Yogurt » 360-629-8620

Tea with Your Dragon

360-926-8259 » teawithyourdragon.com

Wayne's Corner Café » 360-939-2300

Cascadia Chiropractic And Massage

Painless Non-Force and
Traditional Treatment

SHORT-TERM CARE...
Long term
benefits.

NEW PATIENT OFFERING

- Consultation
- Examination
- Digital X-Rays
- 3 Treatment Visits

\$239

Expires
12/31/2016

Limp in...Leap out!

Accepting Aetna, Auto Injury (PIP), Cigna,
H.M.A. and Regence

Dr. Michael T. Breneman | Dr. Shea M. Breneman

SPINAL HEALTH & NERVE SYSTEM SPECIALISTS

Open 6 Days | 1507 172nd Street NE, Marysville, WA 98271

360.652.PAIN(7246) | WWW.CASCADIACHIRO.COM



27 Local Artists... One Smart Gallery

Featuring Fine Art Paintings, Pottery, Glass, Sculpture, Photography and Jewelry from local professional artists. Sign up for our Art Classes and Workshops for beginners and professionals. Proud sponsor of The 25th Annual Art by the Bay Festival in Downtown Stanwood.

Stanwood-Camano



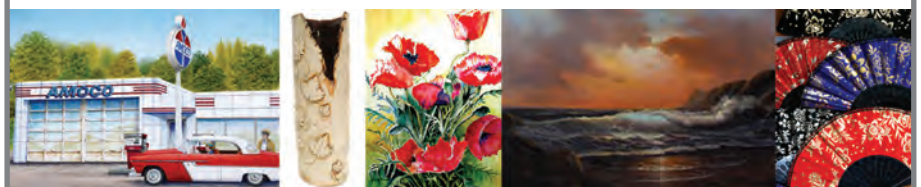
Guilded Gallery

8700-271st Street NW
Stanwood, WA 98292

Phone: 360-629-2787

Open: Tuesday thru Saturday 10am-5pm

Sunday 11am-3pm, Closed Mondays



road trip!

short loop



If you have a couple of hours to spare, hop in the car and discover our backyard. This 30-mile loop will take only an hour to drive, giving you just enough time to enjoy some vintage shopping or relax over lunch.



Ellen Hiatt



Lake Howard

Grace Hiatt

START YOUR ENGINES

- Exit 208 Interstate-5.
- Head West on Pioneer Highway

Begin your short tour of Port Susan in Silvana, a town of 90 residents lying in the floodplain of the Stillaguamish River. Stop in at **Silvana Five and Dime**. It says "Thrift Store", but that's because of the generosity at its core—all the items are donated and sales benefit Sherwood Community Services, helping those with disabilities. It's set up like a classy vintage store and you'll enjoy every minute browsing. Head down the street to **Silvana Meats** where you can buy a couple pepperoni sticks for the road. Just over the river is **Stoffel Farm**, a three generation pig farm with a friendly welcome and a retail kiosk for your dinner fixin's. If you're in need of a cup of coffee, try **Willow and Jim's Cafe** on the other end of town. If you call ahead you might get permission to tour the grounds of the **Little White Church on the Hill**. It's an iconic church built just above the river and overlooking the delta.



(Note: This time of year it's a good idea to check the flood reports. This little town is welcoming, but in flood season you'll have to arrive by rowboat!)

(**Silvana Peace Lutheran Church**: Call (360) 652-8739.)

HIT THE ROAD

- Drive Pioneer Highway West into Stanwood.
- Cross Highway 532 & take the first left at Cedarhome Dr.
- Drive through town on 271st St NW toward 270th St. NW.
- Return past 271st and turn right on 84th Ave. NW, becoming Marine Dr.
- Take Marine Dr. to Lakewood Rd.
- Take Lakewood Rd. to 40th Ave. NW. toward Silvana via Happy Valley Rd. and Ole Larson Rd.

Drive west, past the rich floodplain and farmland and into the town of Stanwood. Cross Highway 532 and hang the next left into town. You'll cross the railroad tracks at the Amtrak station and find yourself in East Stanwood. Nicknamed the Twin Cities for its historic two downtowns that were once independent of each other, both East and West downtown have something to offer. Westward, downtown has a vintage feel with rough brick roads. **Shima Japanese Restaurant** is next to some first-class salons, a vintage and a consignment clothing store. The east end of town sports a cupcake shop and multiple boutiques, vintage stores and several nice restaurants.



Feel like driving a little more? Head south on Marine Dr. Around Florence, there is a landmarked pull-out that borders the Stillaguamish. At **S&T Espresso**, a mobile espresso stand run by a Florence resident, you can refuel yourself. Continue on and you'll see the **Nature Conservancy's estuarine preserve**, providing habitat for overwintering and shorebirds. This is a great time of year to go bird-watching here. The Port Susan Bay property is available by appointment, so call or email ahead if you'd like to come back another time and do a little bird-watching. (Pat Hampton, phampton@tnc.org, (360) 419-3140). Or visit in February during the **Port Susan Snow Goose and Birding Festival** for access to the reserve.

Drive another five miles on Marine Dr. to the first stop sign and you'll be at Lakewood Rd. Hang a left and head toward the seven lakes area. Another three miles, just past the **Lake Goodwin Resort and Store** turn onto 40th Ave NW. Forgot coffee and snacks? There is an espresso stand inside **Seven Lakes Gifts**. Stay the course through a few sharp turns toward Happy Valley Rd. then Ole Larson Rd, over the river, bump across the railroad tracks, and you are back in Silvana.



Seven Lakes Gifts



PROTECTED BY DENSE EVERGREEN FORESTS roughly 15 miles off the I-5, the saltwater beachfront park of Kayak Point serves as a driftwood-laden solace for tourists and locals alike. In the late 1960s, the 670-acre park was projected to become an oil refinery, but in 1972, Snohomish County and the Inter-agency Committee for Outdoor Recreation purchased the land and made it into the Port Susan destination it is today.

With 3,300 feet of shoreline, Kayak Point Regional County Park is scattered with covered and uncovered picnic areas surrounding an obstacle course-style playground and anchored by a 300-foot-long pier stretching into Puget Sound. An additional bonus to the natural beauty is the Kayak Point Golf Course across the street from the park, one of *Golf Digest's* "Top 50 Public Courses to Play."



WHILE IN KAYAK POINT

Kayak Point Golf Course » 360-652-9676 » golfkayak.com
Kayak Point Regional County Park » 360-388-6600



Camano Island

Courtesy Cama Beach State Park

FEW ARE AS FORTUNATE as those who live in the Pacific Northwest. Blessed with diverse landscape, culture and lifestyle, Washington State and the Puget Sound are also home to more than 50 islands. Traced by the shadows of surrounding mountain ranges and lush woodlands within the Puget Sound's "sun belt," lies a collection of islands which includes Camano Island, the fifth largest in population of the inhabited islands. Almost as fortunate as those who live here are those who choose to visit, explore and enjoy Camano, "the shortest distance to far away."

No ferries, no tickets, no tolls—Camano Island is only 60 miles from downtown Seattle, a worthy day trip and a trip worthy of a few days.

Camping & Lodging

If you do make a trip to Camano Island for an overnight stay, book a room at the **Camano Island Inn**, an elegant nine-room inn with waterfront views of Whidbey Island and beyond from Camano's west shores. The serene setting was once a boarding house and transitioned into a hotel in the early 1920s. Today, the modest yet charming and graceful inn welcomes guests into the luxurious suites equipped with canopy beds, indoor or outdoor hot tubs, private waterfront decks and more.

The **Beach House at Tyee** is a fully furnished vacation home, equipped with everything from an open kitchen and outdoor gas grill to sleeping accommodations for up to four guests. Comfortably park two cars, a boat and yourself on the patio of this private estate that welcomes in the sounds and sights of Tyee Beach on southwest Camano. Another private resident renting its quarters is **The Island House** on Camano, located within a wildlife sanctuary on the northern end of the island. Built 10 years ago from trees on the property, the 3,000-square-foot house sleeps eight and boasts high-vaulted beamed ceilings, stained glass, a large kitchen and more luxury options.

For bed and breakfasts, book a room at the **Inn at Barnum Point**, a Cape Cod house on a bluff overlooking Port Susan Bay and the Cascade Mountains. A tranquil place to relax and enjoy your surroundings, the rooms range from three different



Davey Nin/Flickr

styles and all include a private in-room fireplace and breakfast. The **Blue Moon Beach House Bed & Breakfast** also provides spacious suites with private decks, cozy beds and a brightly lit and welcoming breakfast room and waterfront patio.

Rest your head beachside at both **Camano Island State Park** and **Cama Beach**. The former has 88 standard sites, two hiker/biker sites, five cabins, one dump station, two restrooms, two showers and welcomes RVs to the upper camping loop. All campsites are first come, first served. Within the cabins, the rooms are furnished with one folding futon couch that sleeps two, one bunk bed that sleeps three and a table with five chairs. Each cabin provides a fire ring,

an upright pedestal grill, picnic table and a covered porch. At Cama Beach, all overnights are housed indoors at the waterfront cedar cabins and bungalows. Recently refurbished with all of the modern conveniences (including electricity, lights, refrigerators, microwaves and more), the cabins are available for rent year-round to individuals and groups. The two beachside bungalows can sleep up to eight and include a large living room, kitchen area, two small bedrooms and a bathroom with shower, toilet and sink. The historic cabins include a living room, kitchen area and bedroom that can accommodate up to six people. Public restaurants and showers are available nearby.



The Great Outdoors

It's not a stretch to say that Camano Island has something for everyone when it comes to a range of outdoor activities.

For a casual start, hit the links at **Camaloch Golf Course**. The 18-hole, par 72 course offers competitive pricing and has some of the best greens in the state. Camano Island is located in the sunbelt of western Washington and receives half the annual rainfall as surrounding areas.

Take it up a notch by crossing the street to **Canopy Tours Northwest**, a multi-generation family farm that offers zip-line tours through their wooded property. The two-and-a-half-hour tour takes guests on rides through six different zip lines, with the longest lasting 660 feet. Riders of all ages are allowed, as long as they weigh between 65 and 300 pounds. Rates are \$103 for adults and \$65 for youth under 12 years of age. Another family-friendly outdoor site is up the road at the **Rotary Adventure Playground**, a locally funded project completed by the communities of Camano Island and Stanwood. More than 1,000 volunteers helped to build the 10,000-square-foot playground in only five days. The park includes a Viking ship, a small climbing wall and ropes, slides, swings and plenty of space to romp.

Where Camano Island truly revels in all of its natural glory is its parks. The largest and most prominent are Cama Beach and Camano Island state parks. Located on the southwest shore of the island, **Cama Beach State Park** faces Saratoga Passage, the waterway serving as the connector between Whidbey Island, Camano and into Skagit Bay. Cama Beach preserves this unique site on over 433 acres of waterfront, with the renovation and modernization of a 1930s-era

EVERYTHING YOU NEED,
ALL IN ONE STOP!

Camano Plaza

370 NE CAMANO DRIVE
CAMANO ISLAND, WA 98282

CAMANO PLAZA IGA



CAMANO'S ONE STOP SUPERMARKET!

GROCERY • BAKERY • DELI • MEAT • PRODUCE
BEER • WINE • SPIRITS • FLORAL

360-387-7965 OPEN DAILY: 7AM - 10PM

WWW.CAMANOPLAZA-IGA.COM



CAMANO PLAZA TEXACO



CAMANO ISLAND'S GO-TO GAS STATION & MORE!

• CONVENIENCE STORE • LUBE SHOP •
• HAND CAR WASH •

TEXACO: 360-387-1818 LUBE & HAND WASH: 360-387-8180

CAMANO PLAZA ACE HARDWARE

The Helpful Place **360-387-4429**

- PAINT
- TOOLS
- ELECTRIC
- AUTOMOTIVE
- GARDEN
- NURSERY
- PLUMBING
- HOUSEWARES

PUB 282

**Live Music
Trivia Nights
Patio Dining**

Sun. - Thurs: 11am - 10pm
Fri. & Sat. 11am - 11pm
360-926-8960

www.pub282.com





Canopy Tours Northwest

fishing resort. A multifaceted indigenous area, Cama Beach today offers boating, crabbing, scuba diving, fishing, swimming, hiking, horseshoes, wildlife viewing, lodging and 15 miles of trails. A historic boathouse is operated and run by **The Center for Wooden Boats**, a shop that offers boat rentals, from new to antique, sailing, crabbing rentals and boat- building classes.

A mile-long trail will lead hikers and curious travelers to the **Camano Island State Park**, the 173-acre camping park that boasts 6,700-feet of jagged rock shoreline and beach for day-trippers, hikers, bikers and shellfish harvesters. Enjoy hiking and biking trails, areas for boating and diving as well as clamming, crabbing and saltwater fishing. Swimmers are welcome along with personal watercrafts, which have access to two boat ramps and water-skiing. An amphitheater sits along a stunning background for bird watching and other wildlife viewing.

On the southern tip of the island is **Walter G. Hutchison Park**, a simple and easy picnic area with trails. It leads to Tillicum Beach, a seashore for beach access and picnicking. Get beach access at any of the bays and vistas, including Elger Bay, Cavalero Beach, Iverson Preserve and English Boom on the east side of the island, with Ustalady Point and Maple Grove offering locations on the western side. Inland, Camano Park offers a ball field, tennis court, picnic area, playground and multi-purpose center, while Camano Ridge and Four Springs provide areas for hiking and picnicking.

Grab a Bite

Find metropolitan-grade cuisine from the western coast of the island at the **Camano Island Inn's** farm-to-table restaurant. The daily rotating menu showcases Chef Kristopher Gerlach's foraged, hunter-gatherer style of cooking and includes farm-fresh ingredients from the inn's nearby garden. Culinary delights are enjoyed in the inn's comfortable dining room, where guests can savor seasonal fare along with selections from an updated beer and wine list featuring local gems and staff favorites.

At Cama Beach, the **Cama Beach Café** offers provisions and island catering with fluctuating hours depending on the season (check their website for current hours). Much of their downhome comfort food includes their homemade soups, salad, sandwiches, pastries and their breakfast featuring eggs laid by hens only two miles down the road.

Camaloch Golf Course offers its guests more than just links to hit. It is also home to the newly revamped **Rockaway Bar & Grill**, a beer-centric pub and eatery, abundant in televisions and fireplaces. Don't miss out on the bacon-sautéed Brussels sprouts or the half-pound certified Angus beef burgers.

The **Camano Commons** hosts the island's widest range of culinary delights, including a second location for a mainland favorite from Woodinville, Washington, **The Collective**. A family-friendly taphouse with 38 ales and ciders on tap, largely from Northwest producers, the Collective also sports a seasonal menu of fresh salads, tacos, sandwiches, pizzas and more. Within the **Camano Island Marketplace**, which includes a selection of retailers along with art and food, **Camano Island Roasters** pours fresh coffee from their beans, roasted in a neighboring building. Also inside is Stanwood butcher **Del Fox Custom Meats**, providing a wide variety of cuts and

barbecue items, and the new **Pierre's Pastry Café** serving the most amazing freshly baked French pastries.

Marked only by two giant wineglasses in the front yard, **Dusty Cellars Winery** is a boutique family-owned-and-operated winery. Using fruit from their small vineyard in Washington's Columbia Valley, Dusty Cellars handcrafts their wines, from syrah to cabernet franc, in their Camano Island production facility where everything is done by hand. Make sure to stop by **Elger Bay's Kara's Kitchen** for the best cheeseburger on the island.

Unique Shops and Antiques

For shopping on Camano Island, antiquing and secondhand stores take the spotlight and are all within a short stretch of Highway 532.

At **The Spare Room Flea Market**, shoppers can find vintage items, antiques and secondhand goods from local signs, furniture, jewelry, glassware, shoes and more. Also specializing in home décor is **Dahlia's Vintage Marketplace**. Providing "hometown, cottage re-styled furnishings," the rustic décor is refined and refurbished for all interior designing and styling needs.

More than just a thrift store, the **Second Chance Thrift Shop** is staffed primarily by volunteers and provides nearly half of the budget for the Camano Senior Services Association. Outside of donations, memberships, event and rental fees, the nonprofit also relies on the shop's revenues to pay for daily operations and special programs. Rest assured that you'll snag some nifty thrift shop purchases—from housewares and collectibles to vintage antiques.

Pierre's Pastry Cafe at Camano Marketplace





Winter Crabbing

We were going to tell you all about fishing this issue. But let's not. It's not a great season for coho, that silver salmon that puts up a good fight on the hook. But the crab. Let's talk about crab!

This past season was one of the best in recent memory for crabbing in Port Susan. Thankfully, there is a winter crabbing season. Check in at **Elger Bay Grocery** on Camano Island for your license, to talk fishing smack, and get the skinny on the season. Launch your boat at any one of the six boat launches on Camano Island. Or take a stroll at **Kayak Point** and drop your crab pot at the end of the 300' fishing pier.

WINTER CRABBING SEASON

Winter crabbing is generally Nov. 1–April 30. To make sure it's open season for crabbing and other regulations, visit wdfw.wa.gov/fishing/shellfish/crab/area.php

GEAR AND ADVICE

Elger Bay Grocery (1992 S. Elger Bay Rd., Camano Island, (360) 387-9120) has ethanol-free fuel for your boat engine, as well as all the saltwater fishing gear and crab pots you are looking for. Not sure where to find a boat launch? Everything you need to know can be found at this mom and pop store.



CAMANO ISLAND
CHAMBER of COMMERCE

camanoisland.org | 360-629-7136

21st Chili & Chowder Cook-off
Nov 12th, 2016
3-7pm
Camano Center

•

Port Susan Home and Garden Show
March 18th, 2017
Camano Center

370 NE Camano Drive, C104
Camano Island, WA 98282
Open daily 12-4pm

Active Living at Warm Beach

- 90 acre park-like campus
- Miles of walking trails
- Four living style choices
- Swimming pool & exercise room
- Library
- 24-hour security
- Restaurant style dining
- Activities for body, mind & spirit



Warm Beach
SENIOR COMMUNITY
Christ Centered - People Focused

20420 Marine Drive,
Stanwood, WA 98292
360-652-2645
www.WarmBeach.org

Come explore all that we have to offer with lunch and a tour!

Camano Island Marketplace

THE HUB OF THE ISLAND

- Fabulous Fresh Roasted Espresso Drinks from Local Camano Island Coffee Roasters
- Delicious Fresh Baked French Pastries
- Amazing Local Chocolates from Pirates Chocolates
- Unique one of a kind gifts

360.722.7459
848 N Sunrise Blvd
Camano Island

camanoislandmarketplace.com








WHILE ON CAMANO ISLAND

2nd Chance Thrift Shop » 360-629-6142
 Alpaca Ranch of Strawberry Hill » 206-280-8221 » alpacasrus.com
 Ananda Farm » 360-387-0575 » anadafarms.com
 Beach House at Tyee » 425-869-1920 » tyeebeachhouse.com
 Blue Moon Beach House Bed & Breakfast » 360-387-6666
bluemoonbeachhouse.com
 Cama Beach Café » 360-387-3266 » camabeachcafe.com
 Cama Beach State Park » 360-387-1550 » parks.wa.gov
 Camaloch Golf Course » 360-387-3084 » camalochgolf.com
 Camano Island Coffee Roasters » 360-387-5282 » camanoislandcoffee.com
 Camano Island Farmers Market » 301-327-0992
 Camano Island Inn Restaurant & Spa » 360-387-0783 » camanoislandinn.com
 Camano Island State Park » 360-387-3031 » parks.wa.gov
 Camano Island Marketplace » 360-722-7459 » Camanoislandmarketplace.com
 Canopy Tours Northwest and Kristoferson Farm » 360-387-5807
canopytoursnw.com
 The Collective on Tap » 360-926-8975 » collectiveontap.com
 Dahlia's Vintage Marketplace » 360-926-6666
 Del Fox Custom Meats » 360-926-8369 » delfoxmeats.com
 Dusty Cellars Winery » 360-387-2729 » dustycellarswinery.com
 Inn at Barnum Point » 360-387-2256 » innatbarnumpoint.com
 Island Harvest Farm » 360-618-2813 » camanoislandharvest.com
 The Island House » 206-714-3932 » theislandhouseoncamano.com
 Rockaway Bar & Grill » 360-926-8920 » camanorock.com
 Seacoast Gardens » 360-387-6569
 The Spare Room Flea Market » 360-939-0383



Lynda Allan Photography

COMFORTABLE CABINS

Cama Beach State Park features
standard and deluxe cabins
near the beach.

Enjoy spectacular views of
Saratoga Passage, Whidbey Island
and the Olympic Mountains.

For more information or
to make a cabin reservation,
call the park at
(360) 387-1550

Washington State Parks
www.parks.state.wa.us



Discover the Art of Val Paul Taylor



4-Forever, Acrylic on Hardboard

Original Paintings, Letterpress
and Giclee Prints available at

Stanwood-Camano
Arts Guild **Guided Gallery**

8700 - 271st Street NW,
Downtown Stanwood Washington 98292
Phone: 360-629-2787

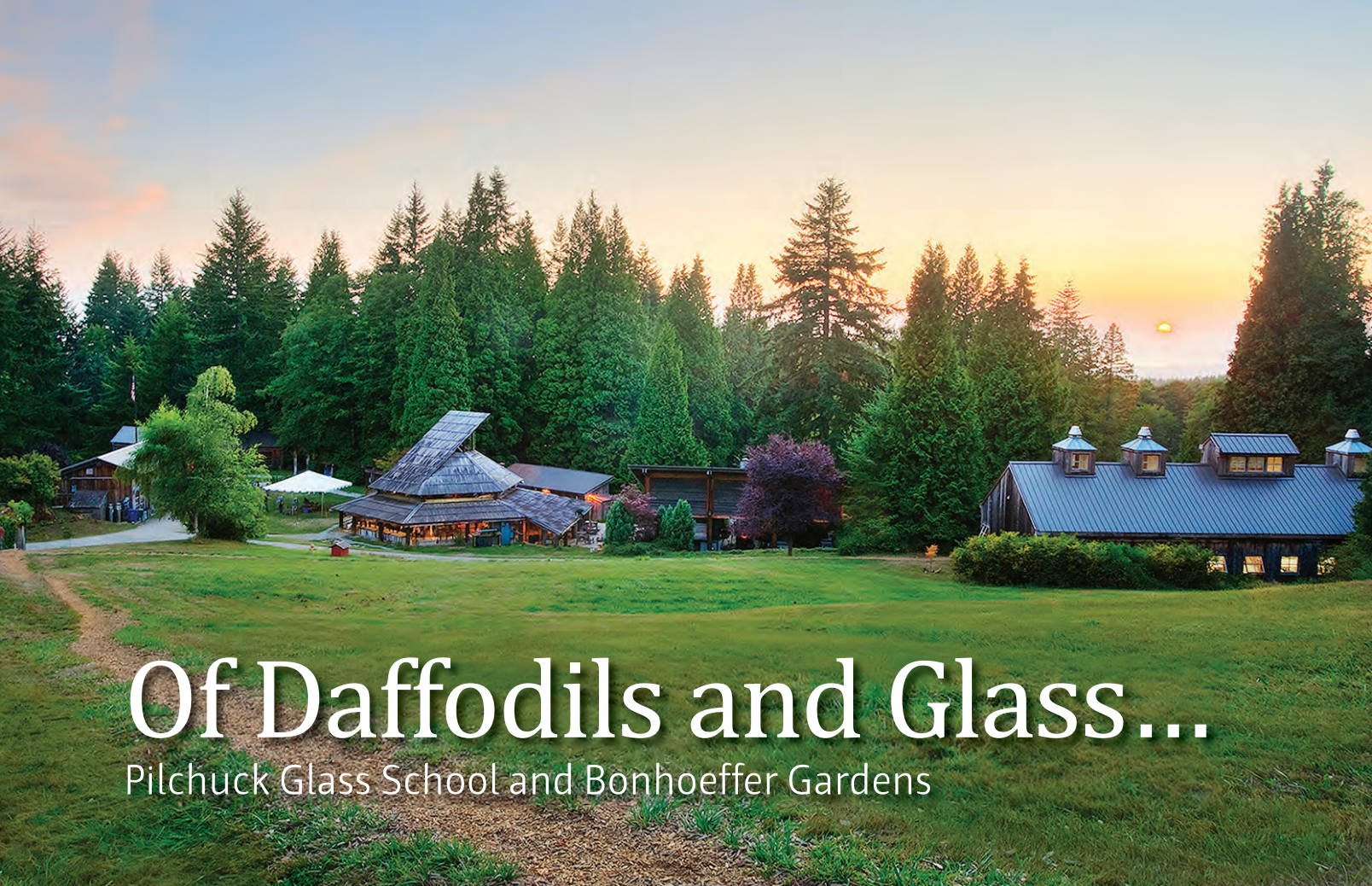


TAKE A TOUR THAT'S OVER THE TOP.

Experience the Northwest like never before as you fly through the treetops of beautiful Camano Island. Our expert guides will share their knowledge of the forest canopy, leaving you with a greater appreciation of our natural environment. We are located an hour north of Seattle and offer van departures from area hotels. CanopyToursNW.com 360-387-5807



CANOPY TOURS NW
ZIPLINE ADVENTURES



Courtesy Pilchuck Glass School

Of Daffodils and Glass...

Pilchuck Glass School and Bonhoeffer Gardens

The connection between artists and nature is found both in the work they produce and in the place they create. The connection between Bonhoeffer Gardens and Pilchuck Glass School goes beyond their proximity to each other and deeper into their love of creation. It lies in their shared history and affinity for the earth and the arts.

PILCHUCK GLASS SCHOOL

Pilchuck Glass School was founded in 1971 on a serene 60 acres, surrounded by the Pilchuck Tree Farm. (Pilchuck is on the east side of I-5 between Stanwood and Mount Vernon off Exit 215.) The school was founded by legendary glass artist Dale Chihuly and patrons John and Ann Hauberg. The site was first a camp for Chihuly and fellow artists who landed there as free-spirited artists looking for space to create.

Each year, from April through September, Pilchuck offers over 35 intensive residential sessions. The school opens the campus to public tours and demonstrations twice per year. (Check their website for dates—www.pilchuck.org—where you can also pre-register for tours.) The spring tours are staffed by artists invited for a five-day residency. They each bring a team who puts on a display of glassblowing, shows examples of their latest creations and welcomes the public to watch.

With little knowledge or equipment, the Pilchuck founders began what has endured today as a spirit of experimentation and exploration. In time, European master glass artists and designers visited the campus and

introduced traditional materials and techniques, combining Old World craftsmanship with New World individual artistic expression. The effect on the world of art glass continues to reverberate across the globe.

"We enjoy an international reputation," said Jim Baker, executive director of Pilchuck Glass School. "Dale Chihuly got it started. There are many other artists who have become well known."

Baker proudly notes the Emmy Award-winning documentary recently produced: *Pilchuck, A Dance with Fire*. In the documentary, narrated by Jeff Bridges, Pilchuck's founders were described as "hippies with chainsaws." The school's timing and artistic energy led to Pilchuck attracting glass artists to the Seattle area until "there were more glassblowers here than there are in Venice," said Chihuly. "Seattle is actually more alive than Venice," said another artist in the film.

The glass art taught and demonstrated at Pilchuck Glass School isn't limited to blown glass, though witnessing an art form born through fire is dramatic. Less drama but as much creativity go into the neon, scientific glass, kiln casting, architectural glass and the carved and etched glass of cold working. Pilchuck students and teachers are masters of many forms of glasswork.

All this and the picturesque campus are on display during the Open House, an annual event filled with hot glass demonstrations, docent-led tours of the campus, a hike off the beaten path to the Chihuly Cabin and the historic "Buster Simpson Treehouse," and ends at Inspiration Point for the breathtaking, 1,500-feet above sea level view of Port Susan. There are also hand-on activities and art for sale.

This is one of the few times when art created at the campus is available for sale. The school's founding is based on artists teaching artists, not

on creating art to be sold. The school doesn't boast a gift shop full of campus-created art for sale. Commercial pieces are ultimately created by each of the school's students as they work within their own studios and communities.

Over the past 45 years, thousands of artists from across the nation and around the world (49 states and 72 countries) have come to learn and grow in their skills. Pilchuck Glass School is a world player in the art scene, as well as a treasured part of Stanwood's history and its future.

Spring is a fabulous time to visit, as your timing might be right to both catch the spring tour at Pilchuck, and witness the explosion of 400,000 daffodils at the Bonhoeffer Botanical Gardens nearby. The gardens are, coincidentally, the only place you will find a complete collection of the glass vessels created over 26 years at the campus and sold at the Pilchuck Glass School's annual fundraising auction.

BONHOEFFER BOTANICAL GARDENS

Bonhoeffer Botanical Gardens is one element of the eclectic campus of the Freeborn Reserve. The reserve hosts the historic, 115-year-old Freeborn Lutheran Church, a fully restored chapel with original fir floors and pews. The church and cemetery are sited by Bonhoeffer Hall, which hosts the Centerpiece Collection, vessels made at the Pilchuck Glass School for its annual auction.

At Pilchuck Glass School's annual fundraising auction beginning in 1988, the centerpieces were mainly glass vessels, that were produced on campus. The vessel and accompanying arrangement were auctioned off every year. Bonhoeffer Gardens has collected at least one vessel from every year and displays them in Bonhoeffer Hall. The remaining pieces collected are scattered at kiosks throughout Bonhoeffer

Botanical Gardens and showcased along with interpretive signs that relay the native vegetation to be found there alongside Lutheran history.

Bonhoeffer Botanical Gardens hosts the Northwest's only completely native botanical garden. The gardens include all of Western Washington's indigenous trees, shrubs, vines and ferns along with grass, moss, mushroom, pond, flower and ground cover species within three types of wetlands. The garden is a labor of love to preserve native plants, while serving as an outdoor educational and recreational resource for coming generations. It includes nearly a mile of wheelchair path access.

The 16 kiosks along the path offer shelter from rain, but they offer something so much more valuable — a home for butterflies. Each kiosk has a roof covered in vegetation that attracts a unique butterfly. The first kiosk is meant to attract Monarchs and has Milkweed on its roof so the butterfly can plant its larva. The Two-Banded Checkered-Skipper is attracted to the dwarf bilberry and Douglas's knotweed at Kiosk 11. The same forethought is displayed in the plantings around the kiosks, where specific birds are meant to be attracted.

While the diversity of plantings is spectacular, the showiest of the seasons is in the spring, when 400,000 narcissus bulbs bloom a carpet of yellow around the feet of the historic church and Bonhoeffer Hall.

You'll even find Pilchuck Glass School work amongst the native plants and butterflies. One year of the glass school's auction the centerpieces were not a vessel. The 2013 design was a cluster of colored crystals. Sixty of these crystals are now found beneath the large trees directly across from the church.

©Don Detrick, North Bend WA



Courtesy Pilchuck Glass School

GETTING THERE

Pilchuck Glass School and Bonhoeffer Gardens are just a few miles apart and both on the east side of Interstate 5, just off exit 215. Both are available either during specific tour periods or by appointment. Please call or visit their websites for details.

Pilchuck Glass School

1201 316th St NW
Stanwood, WA 98292
www.pilchuck.com
(360) 445-3111

Bonhoeffer Gardens

2420 300th St NW
Stanwood, WA 98292
www.plc215.org
(877) 875-0215

Pilchuck Glass School Open House

Visit www.pilchuck.org for spring date.

Open House is the day, each year, when Pilchuck Glass School opens its private Stanwood campus to the public for an exclusive Pilchuck summer experience! An example of activities from years past includes:

- Glass demonstrations by renowned glass artists
- Docent-led tours of Pilchuck's picturesque campus
- Exclusive Off the Beaten Path tour: visit the Chihuly Cabin, Buster Simpson's Treehouse, the Trojan Horse, and end the tour at Inspiration Point with a breathtaking view of the Puget Sound
- Glass art sale
- Hands-on glass activities
- Food and beverage concessions
- Go hands on with glass blowing, etching and printmaking.



road trip!

make it a day trip



Fasten your seat belts!

This road trip is three hours long and covers more than 100 miles of road as you cruise ALL of the Port Susan recreation area. From Conway to Camano, Stanwood to Pilchuck, Silvana to Seven Lakes. You're going to see it all!



■ CONWAY TO CAMANO

- Exit 221, Interstate-5.
- Go south on Pioneer Highway, 5 miles to Old Pacific Highway.
- Take highway 532 to Camano Island.
- Turn left at the Y at Terry's Corner and take East Camano Dr.
- Take south Camano to North Camano, via: S. Camano Dr. to W. Mountain View Rd to SW Camano Dr. to Sunset Dr. to North Camano Dr.
- Return to Highway 532 from E. North Camano Dr. and into Stanwood.

BEGIN YOUR TRIP in Conway. It's the Northwest so of course there is an espresso stand on either side of the highway on your way into town. Don't forget to stop at **Ella Bella Vintage Finds**. Head south on Pioneer Highway, past the **Skagit Wildlife Area** and restored wetlands. These are fabulous feeding grounds for the overwintering birds like swans and snow geese and you're here during a great time of

year for bird-watching (See page 30).

Take the Old Pacific Highway for the farmland view into Stanwood. Hungry for breakfast? There are several nice little mom and pop style diners here. Head south on Highway 532, cross the bridge and you're on Camano Island. Say Ahhhhhhh! You've arrived. This island was known to the indigenous Snohomish tribe as *kal-lut-chin*, which means "land jutting into a bay." Here you can go crabbing (stop at **Elger Bay Grocery** for details or see page 17). The island is only 15 miles long, but to travel its circumference you'll need about an hour. Besides...why rush a good thing/ You'll find incredible views of Port Susan, Livingston Bay and Saratoga Passage.

At E. Mountain View Rd. you'll want to stop at Elger Bay and replenish fuel for your car and yourself. From there, head to **Cama Beach State Park**.

The 1930s-style waterfront cabins are fully restored. Thinking of staying



the night? The cabins are for rent and winter is great for availability and storm watching. If you'd like something more luxurious, **Camano Island Inn** has what you need, along with a resident chef.

Follow the scenic route back north to Terry's Corner and you'll find yourself back on Highway 532 and headed toward Stanwood.

■ STANWOOD TO PILCHUCK

- Off Highway 532 turn left (north) onto 102nd Ave. NW (at the first light).
- Turn right on 271st St. NW.
- Take 271st St. NW to Cedarhome Dr. then go left on Pioneer Highway.
- Turn right on 300th St. NW (becomes Freeborn Rd.). At I-5 take a right and a left to go under I-5, then continue on Freeborn Rd.
- Take Freeborn Rd. to English Grace Rd. and go right on 316th St. NW.

BEGIN IN WEST STANWOOD where the **Stanwood Hotel and Saloon's** patrons swear by paranormal activity. Ghosts of Twin Cities' past? This restored historic building features bands in the evening, and Stanwood's only hotel rooms. Down the street is **Loco Billy's Wild Moon Saloon** for more night life. Turn on the second block at 271st St NW for some brick road charm and Stanwood's venerable Japanese and sushi restaurant, **Shima**. A two-story vintage store, with treasures in every corner, a consignment clothing story that earns its name **Pretty Little Things**, and salons also dot the little street.

Continue through town, where you can refill both groceries and gas or grab a Starbucks. (That is, if you didn't stay on Highway 532 and discover homegrown **Cookie Mill** for fine lattes, lunch and baked goods.) It's only a three minute drive from West to East Stanwood. In the second historic district there's more shopping with multiple boutiques like **Laurie's** and **Ladders & Lace**, vintage shopping at **Starlight Vintage Emporium**, and **Doilies 2 Doorknobs**. This end of town has a few surprises in store, like **The English Market** tucked behind the emporium, and **Tea With Your Dragon**, a vendor with 150 bulk herbs, spices and teas just one floor above.

You say you're hungry? You just passed **Farmer's Cafe** and up the road is **Wayne's Corner Cafe**. Or try **Jasmine's Thai Cuisine** and **Sushi** or one of Stanwood's five Mexican restaurant options.

Hit the road, Jack! Your belly is full and it's time to head on down to **Pilchuck Glass School** and **Bonhoeffer Botanical Gardens** and stretch those legs (See page 20). You may need to call ahead but if you don't have plans to tour, it's a beautiful drive just the same. Cross the railroad tracks and keep left. Pioneer Highway will take you to 300th which is a country drive up to Freeborn Rd., ultimately going under I-5 (just a 7 minute drive) Welcome to Bonhoeffer Gardens. You



have arrived in paradise. This little restored Lutheran Church sports a native plant botanical garden and a display of Pilchuck glass. In the spring you may witness 400,000 narcissus bulbs in full yellow bloom. Just five minutes down the road is another rural surprise: Pilchuck Glass School, the genesis of Seattle's bustling and world-renowned art glass scene. (See page xx for visiting guidelines and open house events.)

Getting from Pilchuck to Silvana:

- Turn right onto 3rd Ave. NE/ Kuhnhausen Rd.
- Turn right onto Stanwood Bryant Rd.
- Go left onto Old 99 N/
- Slight Right onto 4th Ave NW/
- Right onto 236th St NW/
- Left onto Pioneer Highway/



■ SILVANA TO SEVEN LAKES

- Go north on Pioneer Highway toward Bruseth Rd./Sather Rd. and turn left.
- Continue on Ole Larson Rd. Take Happy Valley Rd. to Lakewood Rd.
- Turn right onto Lakewood Rd. and left onto E. Lake Goodwin Dr.
- The road becomes W. Lake Goodwin Dr.; take that to Lakewood Rd.
- Turn left onto Lakewood Rd and head West to Marine Dr. and turn left.
- Turn right at 180th St. NW/Marine Dr. and go left again onto Marine Dr.

We like to take the back country roads and avoid the highways, in case you haven't noticed. That's what a Sunday drive is all about. So kick back and enjoy the rural beauty of Port Susan. In Silvana, it's nothin' but kickin' back. At **Willow & Jim's Cafe** you'll get a very friendly greeting from Willow. Their windows look out at the old fire hall and grain mill by the railroad tracks. Past those tracks you'll find an RV camp along the Stillaguamish riverfront.

You don't need directions in Silvana. There's only one street with merchants.

Down from the cafe is **Silvana Five and Dime Thrift Store**. Beyond that is the **Mercantile**, where small groceries and fishing supplies are available. A three-minute walk down the road and you'll find every carnivore's destination: **Silvana Meats**. Front staff holler back into the shop for the grass fed beef. Coolers line the tiny storefront and hold the destination-worthy pepperoni sticks and bacon. You'll be elbow to elbow with the locals in here. **Stoffel Farm** (Page 22) is worth a call while you're in the neighborhood. Fresh pork and friendly farmers here.

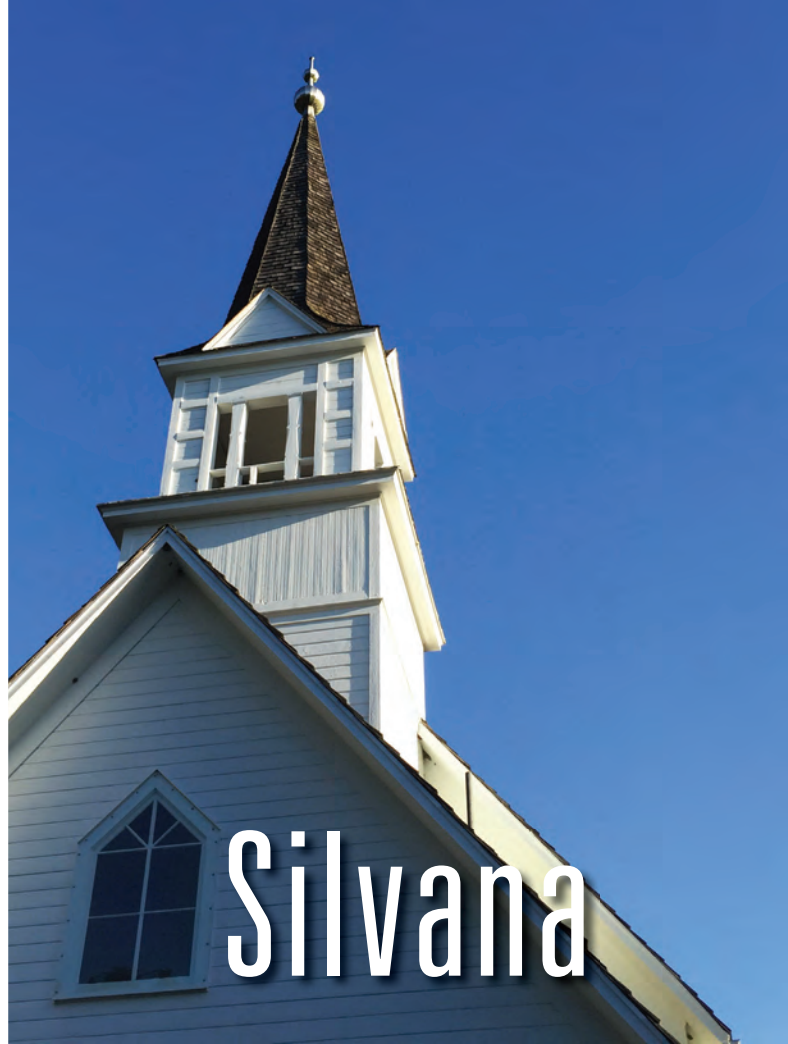
Head north out of Silvana and turn left by the church. That will take you across the tracks, across the river and through some pretty back country. You'll pop out onto Lakewood Rd. You are now among the seven lakes. In fact, turn right and then left and you can navigate the circumference of Lake Goodwin, the largest of the seven. This lake boasts **Wenber County Park**, a 46-acre gem with a boat launch, camping and a swimming hole. There are three RV resorts in the area, and **Seven Lakes Gifts & Espresso**.

Take Lakewood Road west till you hit a stop sign. That's the Warm Beach area and the famous **Lights of Christmas at Warm Beach Camp** are just a couple miles up the road. Head south on Marine Dr. and you'll find **Kayak Point Regional Park**. Near a golf course, this beauty boasts camping with yurts, a cabin, and sizable waterfront park with a 300' fishing and crabbing pier.

Ready to go home? Head back on Marine Dr. and catch Pioneer Highway back to Conway. It's been a great ride! Next time, consider staying over at any one of our lovely inns and bed and breakfasts, storm watch from **Cama Beach** cabins, or relax at the **Angel of the Winds Casino & Hotel** near Pilchuck Glass School & Bonhoeffer Gardens.



Lynda Allan Photography



Grace Hiatt

The downtown of Silvana, Washington can be summed up in a singular street—a clipping of blocks along the picturesque Pioneer Highway. Comprised of less than 100 residents and 1.5 square miles of land, Silvana’s sweetness originates from its small-town simplicity; from a handful of functioning farms to a destination-worthy butcher and vintage décor shop.

Just a few miles off I-5, the southern entrance to Silvana is outfitted with pastoral farmland, where off-road sheep graze. Silvana Five and Dime Thrift Store is more like a destination vintage store. But its items are donated and the proceeds benefit a worthy organization, Sherwood Community Services, for children and adults with disabilities.

Hazel Blue Acres offers certified-organic blueberries (frozen of course) during the winter months. You will see signs to call or email along the highway for easy pick up.

Willow & Jim’s Country Café is where locals and visitors alike enjoy home-style cooking in a friendly atmosphere. Around for more than 16 years this recently rebuilt restaurant has served the Silvana community faithfully with quality food and exceptional service. Open Wednesday through Sunday 7 a.m. to 3 p.m. and Friday 7 a.m. to 7 p.m. serving breakfast, lunch and dinner with country hospitality.

With reviews from locals and out-of-towners alike that rave about their pepperoni sticks and garlic sausage, **Silvana Meats** place is rated as “amazingly good.” Pick up your grass fed beef for the grill. Craving bacon? Call ahead to **Stoffel Farms** for heritage pork



products including pork roast to spare ribs, a variety of sausages, chops and more.

Looking for the perfect Christmas Tree? **Muskrat Flats U-cut Christmas Tree Farm** will welcome you with a scrumptious cup of hot chocolate as you choose the perfect tree to take home.

Relax and unwind at **Spa Violet Ray**, a full-service beauty salon and day spa. Promoters of health, wellness and beauty, this boutique focuses on hair, skin, mind and body with services ranging from facials and waxing to reflexology treatments, seaweed body wraps and pedicures.

For a little local history, visit the **Little White Church on the Hill** located off Pioneer Highway (ninetenths of a mile north of Willow & Jim’s Café in Silvana). This quaint church built by pioneer families in 1890 and overlooking the beautiful Stillaguamish Valley makes a picturesque site for weddings and events.

WHILE IN SILVANA

Hazel Blue Acres » 360-770-7261 » hazelblueacres.com

Silvana Community Fair » silvanafair.com

Silvana Meats » 360-652-7188 » silvanameats.com

Spa Violet Ray » 360-652-8777 » spavioletray.net

Stoffel Farm » 360-652-8176 » facebook.com/StoffelFarm

Willow & Jim’s » 360-652-0372

SILVANA

Willow & Jim's COUNTRY CAFE

Closed Mon-Tues • Wed-Sun 7am to 3pm • Friday 7am to 7pm

Homemade
Soups and Pies
Breakfast, Lunch



Old-fashioned.
Hand-dipped
Ice Cream and Shakes



It's where you go to see everyone
you haven't seen since yesterday



360.652.0372 • 1421 Pioneer Hwy, Silvana

Muskrat Flats U-cut Christmas Tree Farm

Open weekend after Thanksgiving
Sat, Nov. 26 - Dec. 26

(360) 652-9184 • 501 Pioneer Hwy



COME TO THE SHOP ...
BUT CALL FIRST!
Fri-Sat 10am-5pm, Sun 1-5pm
360 652 8176

Local & Home-grown

Stoffel Farm Shop

All natural pork products and eggs
9 flavors of gourmet ground pork
Chops • Steaks • Roasts • Tenderloin • Ribs
2 flavors of bacon
20610 6th Ave NW, Arlington, WA



spavioletray.net

1415 Pioneer Hwy, Silvana

360-652-8777



Like us on Facebook

TAKE TIME
FOR YOU

Health and
wellness
treatments
for skin,
hair, mind
and body



Silvana Produce

Farm-fresh

501 Pioneer Highway
Silvana
(425) 501-0013



Frozen Blueberries
Handmade Blueberry Ice Cream

HAZEL BLUE ACRES

430 Hevly Rd, Arlington, WA



CERTIFIED ORGANIC

BLUEBERRIES • HAZELNUTS

(360) 770-7261 Call or text for hours • www.hazelblueacres.com

Conway

Don't let the "Where the Hell is Conway" bumper stickers dissuade you—this town might be small and spirited, but Conway is as vivacious and unique as, well, the bumper stickers on residents' vehicles. At the most northern point of the Port Susan area, Conway is the gateway to Skagit County, home of tulips, birding and a namesake river. Built on hardly more than a quarter mile, Conway proper hosts fewer than 100 residents, but has the attitude and presence of a city at least double its size.

Find your footing in Conway at the **Conway Pub and Eatery**, a tavern that is a fraction of the size of its legendary reputation for barbecued and fried oysters and colossal burgers. An expansive patio lures guests out to the metal chairs and outdoor bar, equipped with its own grill and full-service liquor support. Once inside, the tavern offers guests a perfect balance of dive bar charm with fresh and flavorful food.

Across Fir Island Road, the highway leading to the bridge that connects Conway with the island of the same name, the **Conway Skagit Barn** hosts the **Conway Deli**, specialists in roadside sandwiches and ice cream cones on the go, and the tasting room and gift shop for Mount Vernon-based winery **Pasek Cellars**. Owned and operated by David James, this winery is the largest producer of fruit wines in the state of Washington. Best known for



Curious Goods

Photos Lynda Allan Photography

its cranberry wine, Pasek also produces a large variety of fruity flavors from loganberry to passion fruit, along with dry reds and dessert wines. Make sure to grab a pack of mulling spices in the gift shop to make your own mulled wine.

At the end of Main Street, an eclectic and novel business is adding to Conway's unique repertoire—the **Conway Muse**. A theatrical venue offering everything from live bands and open mic nights to readings, art displays, plays and more, lovers of the arts flock to the Muse, a performance institution since 2005. Originally a Scandinavian dairy barn built in 1915, the Muse has been a number of businesses since, such as a glass shop, antique market and auction barn. The original hayloft doors and rail were left in tact and provide a rustic and authentic atmosphere to the performance space. Offering an in-house restaurant and bar, plenty of outdoor seating including inside an old stern-wheeled river-boat and in the beer garden, the Muse is open Thursday, Friday and Saturday nights for Conway-approved, family-friendly entertainment. Tickets are



sold online at brownpapertickets.com or at the door.

Back into the core of the street's main drag, two antique shops showcase goods unique to the area. A 14-year veteran, **Curious Goods**, sells and shows antiques and collectables with a varied selection of antique furniture, original art, custom stained glass and heaps of unique goods in the 4,500-square-foot show center. Also mastering the craft of antiques, **Ella Bella Vintage Finds** sells hand-selected items like refurbished furniture, artwork, apparel, kitchenware and home décor.

Find the latest fashions at **Pink Petals Boutique**, Conway's women's clothing store and gift shop. From Steve Madden boots and Hobo International purses to delicate perfumes and aromatic candles, **Pink Petals** sports all the trends that are in vogue for the moment. Be sure to check their Facebook page for flash sales, happy hours and giveaways.

WHILE IN CONWAY

Conway Pub & Eatery » 360-445-4733
Curious Goods » 360-445-2068
Ella Bella Vintage Finds » 360-310-2264
Pasek Cellars » 888-350-9463 » pasekcellars.com
Pink Petals Boutique » 360-399-1360
The Muse » 360-445-3000 » conwaymuse.com

Ella Bella VINTAGE FINDS

18628 Main Street, Conway
360.310.2264

Mon-Sat 10:30am - 5pm • Sun 12pm - 5pm

SUSAN ACKERMANN
ellabellavintagefinds@gmail.com
[facebook.com/ellabellavintagefinds](https://www.facebook.com/ellabellavintagefinds)





Events

OCTOBER

1, 8, 15, 22-OCT
Stanwood Farmers Market
 Every Friday 2-6PM
 East Stanwood
 360.202.3932
portsusan.org

1, 8, 15, 22-OCT
Pumpkin Fest
 Stanwood
glassquest.com

1-OCT
OktoberFest
 Stanwood

19-OCT
Miles Black with Greta Metassa Dinner Concert
 Camano Center
 360.387.0222
camanocenter.org

22-OCT
Harvest Festival & Haunted BOOathouse
 Camano Island State Park
 (360) 902-8844
<http://parks.state.wa.us/calendar.aspx?CID=146,164>

29-OCT
Halloween Dance
 Camano Center
 360.387.0222
camanocenter.org

Holiday Gift Shop
 Camano Island Marketplace

31-OCT
Trick or Treat on Main Street
 East Stanwood
 360-926-8205
doilies2doorknobs.com

NOVEMBER

Light Up Your Holidays
 Stanwood/Camano Island/Warm Beach
 425.314.4830
facebook.com/DiscoverPortSusan

Christmas Tree Lighting Ceremony
 Stanwood
 425.314.4830

4, 5-NOV
Warm Beach Holiday Bazaar
Warmbeach.org

5-NOV
Silvana Holiday Fair
 Peace Lutheran Church

11-NOV
Discover Pass Free Day
 Camano Island State Park
 (360) 902-8844
parks.state.wa.us/calendar.aspx?CID=146,164

16-NOV
Pearl Django Jazz Series
 Camano Center
 360.387.0222
camanocenter.org

19-NOV
Holiday Craft & Gift Bazaar
 Camano Center
 360.387.0222
camanocenter.org

26-NOV
Visit From Santa
Get your picture with Santa
 Camano Island
 360.722.7459
camanoislandmarketplace.com

DECEMBER

Light Up Your Holidays
 Stanwood/Camano Island/Warm Beach
 425.314.4830
facebook.com/DiscoverPortSusan

Old Fashioned Christmas
 West Stanwood
 360-629-6110
sahs-fncc.org

Warm Beach Lights of Christmas
 Stanwood- Warm Beach
 360.652.7575
thelightsofchristmas.com

13-DEC
Afternoon with Santa
 Camano Center
 360.387.0222
camanocenter.org

15-DEC
Ron Jones Big Band Dinner Concert
 Camano Center
 360.387.0222
camanocenter.org

31-DEC
New Years Eve Dance
 Camano Center
 360.387.0222
camanocenter.org

JANUARY

31-JAN
Corey Weeds and Harold Maburn-Jazz Series
 Camano Center
 360.387.0222
camanocenter.org

FEBRUARY

15-FEB
Miles Black Trio Dinner Concert
 Camano Center
 360.387.0222
camanocenter.org

17-26-FEB
Great Northwest Glass Quest- Find the Treasures
 Stanwood
 425.359.7974
thegreatnwglassquest.com

25-FEB
Wedding Show
 Camano Center
 360.387.0222
camanocenter.org

FEBRUARY 25-26
Snow Goose & Birding Festival
 Stanwood
 Visit website
snowgoosefest.org

MARCH

Port Susan Home & Garden Show
 Camano Island
portsusanhomeandgarden.com

25-MAR
55+ Resource Fair
 Camano Island- Camano Center
 360.387.0222
camanocenter.org

15-MAR
"Randy Halberstadt Trio- Jazz Series"
 Camano Center
 360.387.0222
camanocenter.org



24-26-MARCH
Camano Historic Sites Tour
CamanoSchoolHouse.org/HistoricSitesTour

APRIL

Pilchuck Glass Open House
 Stanwood Wa
 360.445.3111
pilchuck.com

29-APR
Women's Expo
 Camano Center
 360.387.0222
camanocenter.org

29-APR
Tulip Festival
 Skagit Valley

MAY

Touch A Truck
 Stanwood
 City of Stanwood event
discoverportsusan.com

Camano Island Studio Tour
 Camano Island/Stanwood WA

Pilchuck Glass School Spring Tour
 Stanwood
 360.445.3111
pilchuck.com

The Lights of Christmas

20th YEAR
Over ONE MILLION lights & more!

★ Nightly Festival
🎤 Holiday Theatre
🏠 Overnight Getaways

*Advance reservations required

WarmBeachLights.com • 800.228.6724



Cama Beach State Park



Delack Estate Outdoor Wedding Venue

Perfect Location

Special occasion venues in Port Susan

CELEBRATIONS AND GATHERINGS in the Port Susan area are as unique as the people attending them. Finding a place here that reflects the character of your special event is easy, as the options are as diverse as waterfalls, rocky beaches and cabins, serene lakes and historic barns.

Looking for a little country charm with a barn? **The Conway Muse**, a barn brought to life with live music every weekend, also serves as a special event location with room in its loft. Silvana and **Countryside Meadows** boasts mountain views, and pristine grounds. **Tazer Valley Farm** is the perfect place to arrive by horse and carriage. The barn is surrounded by a Christmas Tree Farm and was featured in a wedding in TLC's *Four Weddings* series.

Going outdoors? **Delack Estate Outdoor Wedding Venue** greets visitors with a cascading waterfall on five acres near Lake Goodwin. Wedding ceremonies on the cedar bridge surrounded by flowers have been described by brides as "absolutely gorgeous," and the event tent as "beautiful with chandeliers and wispy curtains."

Going country without the barn? There is nothing more beautiful than a park on Camano Island. **Four Springs House** is an island county park on a 50-acre nature preserve. The peaceful retreat setting overlooks a lake and includes a main house with a 15-foot faulted ceiling.

Cama Beach State Park is such a beautiful site it hosted more than 70 weddings the first year it opened. The lodge is ideal, as is, of course, the stunning beach lined by historic cabins. Or, go all Northwest and hold your event at the **Center for Wooden Boats'** facility.



The Conway Muse

360.445.3000
www.conwaymuse.com

Countryside Meadows

360.652.9032

Tazer Valley Farm

360.391.3352
www.tazervalleyfarm.com

Delack Estate Outdoor Wedding Venue

425.320.1611
www.delackestateweddingvenue.com

Four Springs House

360.387.1418
www.fourspringshouse.com

Cama Beach State Park

parks.state.wa.us/391/Cama-Beach

State and Local Parks

The City of Stanwood also offers Church Creek Park with a shelter, and Kayak Point Regional Park, operated by Snohomish County, is an ideal waterfront location, also with shelters. Both require a special event permit.
www.ci.stanwood.wa.us
www.snocoparks.org

ANGEL OF THE WINDS

CASINO • HOTEL
BREWERY

877-EXIT-210

AngelOfTheWinds.com

Stay For Less Play Longer

Brewery
Pizza, BBQ, And More!

1,100+ Hot Slots



Exciting Table Games



Delicious Buffets



Luxurious Rooms



XPERIENCE
PLAYERS CLUB

New Members
XPERIENCE Up To

\$2,000 IN
FREE
PLAY!

Sign Up
Today

FUEL DISCOUNTS START AT 7¢
WITH YOUR XPERIENCE CLUB CARD!

Like us on
facebook 

Management Reserves All Rights

Easy Access!
No Traffic From 



Photos Lynda Allan Photography

It's for the Birds

BIRDERS, AS YOU MAY KNOW, ARE AN INDOMITABLE SPECIES OF THEIR OWN. They'll travel miles to walk all day in rainy weather. Witnessing the great migrations of snow geese and catching sight or photographing the hundreds of birds that make their home here, however temporary, is a thrill.

Our wet and windy winters are prime birding season. Snow geese, Western Screech-Owl, Vaux's Swift, Spotted Sandpiper. It's a long list.

Fall and spring are the best times of the year for the migratory shorebirds. Port Susan is one of only four locations in Puget Sound that regularly support more than 20,000 shorebirds in a season. Large flocks of wintering ducks use the sloughs and sheltered bays. Hedgerows and fields provide wintering habitat for sparrows, making it a fine place to spot unusual sparrows, such as Harris's, American Tree and more.

The rich farmlands, tideflats, estuaries and hedgerows of the Stillaguamish and Skagit Rivers provide the right environment. The snow geese are particularly plentiful, filling the fields with squawking blankets of white and gray.

Every year in February, the community holds the Port Susan Snow Goose & Birding Festival, which includes speakers who share the wonder of the birds' migration to Russia. Identifying birds, photographing, and understanding their habitats are among other topics shared.

Top it all off with a guided tour of the Nature Conservancy's prized Port Susan Bay Preserve, bus tours of snow geese, swans and bald eagles, and self-guided tours throughout Stanwood and Camano Island birding areas.

Bring your binoculars and rain gear. This is the time of year to be in Port Susan.



Port Susan Snow Goose and Birding Festival

More information on the festival's confirmed date, great birding areas, species of interest, such as the swan pictured above, and their migratory habits, environment and more can be found on the festival's website at www.snowgoosefest.org

OPEN STUDIOS YEAR ROUND

Camano Island's most successful artists
invite you into their studios and galleries.



MATZKE FINE ART GALLERY AND SCULPTURE PARK

Glass, paintings, sculptures and a ten acre park with 75 artists. Voted Best Gallery.
11am - 5pm Sat & Sun • Weekdays by appt.

2345 Blanche Way, Camano Island WA
360-387-2759 • matzkefineart.com



SUSAN COHEN THOMPSON

PAINTINGS AND CERAMICS

Immerse yourself in Susan's expressive nature art. Call to enjoy a studio visit next to the Camano Island State Park.

2188 Lowell Point Rd, Camano Island, WA
425-750-4994 • thompsonartstudio.com



JOHN EBNER

Considered the area's most collected artist, John has painted and studied the area for the past 35 years. Call to schedule a studio visit.

808 Holbeck Dr, Camano Island WA
360-387-0536
johnebner.com



KARLA KAY ART

Specializing in Hand Painted Silk and Deluxe Coloring Posters inspired by Hand Painted Silk Designs.
Call or email to visit the studio.

Studio located at the Stanwood/Bryant Road exit off I-5 Arlington, WA
425-220-7181 • Karlakayart@gmail.com



FORTÉ MUSIC DANCE ART

"Experience art inspired art" by Christopher Tuohy. Forté displays the work of many artists – paintings, drawings, jewelry, sculpture, tiles, and many other items for art consumers to enjoy!

Gallery open Sun 1pm - 5pm or by appointment
1095 Essex St. A-1, Camano Island WA
360-207-4632 • fortemdma.com



CAMANO ISLAND ART GLASS

Stunning fused glass custom lighting, amazing cast glass tables and benches, creative wall art and functional fused glass pieces. Studio located near LaConner. Call or email to schedule a visit.

Mary Simmons
CamanoGlass@gmail.com • 206.795.7909
CamanoIslandArtGlass.com



Start Your Next Chapter In Stanwood/Camano



Life happens fast. New job? Empty nest? Second home? Whatever the next step may be, our job is to help you find a home that fits. A place to create new memories, tell old stories—start the next chapter. If you have any real-estate-related needs in the Stanwood/Camano Island area, count on the people and the brand you trust to help.

**CAMANO ISLAND
COUNTRY CLUB**
(360) 387-3411

**CAMANO ISLAND
TERRY'S CORNER**
(360) 387-4663

STANWOOD
(360) 629-8233



CamanoLife



windermerecir



windermerecir

CamanoRealEstate.com


Windermere
REAL ESTATE

WINDERMERE REAL ESTATE/CIR