

Find Your Home In:

San Diego

Inland Empire

Central California

Northern California

Washington State

Welcoming Communities
For Your Friends & Family

Welcome Home

OUR MISSION is to create and provide a quality living environment to enhance the lives of our residents.

WE BELIEVE every resident should receive the best personalized attention and services possible from our property management team.



What's Happening
At Your Property!



Choose Your
Home Today!



PACIFIC LIVING

Working Toward a
Sustainable Future

RECEIVE
FOR YOUR RENTAL
OR LEASE RENEWAL

\$100

DETAILS





Our Communities

Your Neighborhood



San Diego

- Aztec Pacific
- Catalina Pacific
- Golden Pacific
- Ivanhoe Cottages
- Mission Pacific
- Pacific Heights
- Pelican Point
- Talmadge Point
- The Pacific At Mission Bay
- Torre Del Mar

Discover San Diego

San Diego is acclaimed as one of the most desirable cities in the world known for its ideal climate, pristine beaches, first class universities, cultural venues, popular attractions, healthy lifestyle options and charming neighborhoods such as [Kensington](#), [Pacific Beach](#), [La Jolla](#), and [Ocean Beach](#) just to name a few. All this makes San Diego a great place to work, play and live. We invite you to learn more about our apartment communities in San Diego.

> [Discover More](#)





Welcome

[Features & Amenities](#)

[Gallery](#)

[Floor Plans](#)

[Check Availability](#)

[Neighborhood](#)

[Resident Services](#)

[Contact](#)

[Apply Online](#)

[Award Winning!](#)

[be green.](#)

[Learn more about our sustainability program](#)



[View More Photos](#)

Catalina Pacific



2660-2674 Hornblend Street
San Diego, CA 92109

[Map It](#)

Phone (858) 272-7464
Fax (858) 272-7527

[Share This](#)

[Steps to Mission Bay](#)

Best Value in Pacific Beach

An amazing value awaits you at Catalina Pacific. Our charming one and two bedroom homes close to Mission Bay offer affordable prices in one of San Diego's most desirable beach area locations. Our community features a charming courtyard with fountain, gas bbq, & reserved parking. Enjoy our pool, spa, fitness and computer center, with direct access to the Pacific Beach biking trail you are minutes away from enjoying the bay and beach. With easy access to I-5 you are close to everywhere you want to be. If you are looking for an exceptional value in Pacific Beach, then come home to Catalina Pacific.



Welcome

Features & Amenities

Gallery

Floor Plans

Check Availability

Neighborhood

Resident Services

Contact

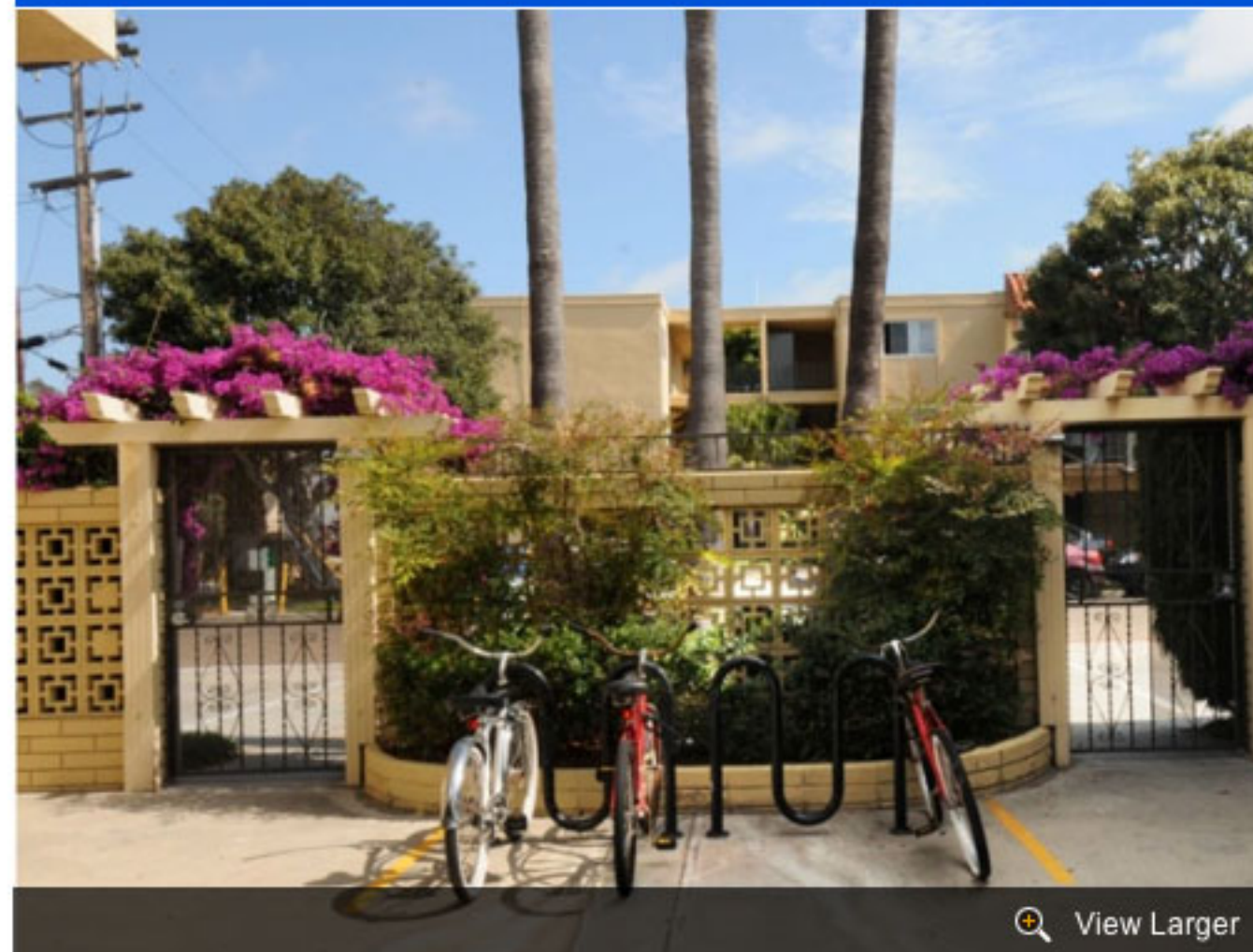
✓ Apply Online

★ Award Winning!

be green.

[Learn more about our sustainability program](#)

Photos



View Larger



Catalina Pacific



2660-2674 Hornblend Street
San Diego, CA 92109

[Map It](#)

Phone (858) 272-7464
Fax (858) 272-7527

[Share This](#)

★ Steps to Mission Bay



Welcome

Features & Amenities

Gallery

Floor Plans

Check Availability

Neighborhood

Resident Services

Contact

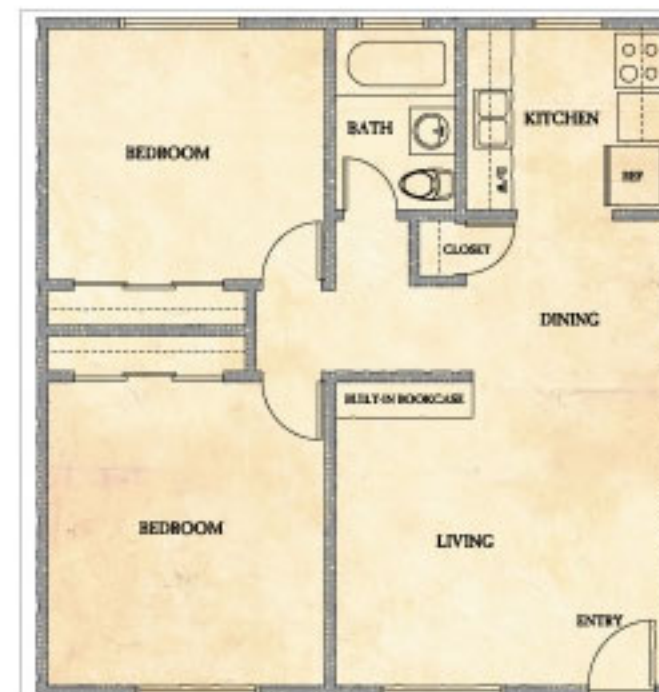
Apply Online

Award Winning!

be green.

[Learn more about our sustainability program](#)

Floor Plans



Two Bed / One Bath

2 Bedrooms, 1 Bathroom

750 Sq. Ft.

2D FLOORPLAN

FURNITURE PLANNER

CHECK AVAILABILITY



One Bed / One Bath A

1 Bedroom, 1 Bathroom

650 - Sq. Ft.

2D FLOORPLAN

CHECK AVAILABILITY



One Bed / One Bath B

1 Bedroom, 1 Bathroom

650 - Sq. Ft.

Catalina Pacific



2660-2674 Hornblend Street
San Diego, CA 92109

[Map It](#)

Phone (858) 272-7464
Fax (858) 272-7527

[Share This](#)

Steps to Mission Bay